

Ethernet adapter Ethernet0:

```
Connection-specific DNS Suffix . :  
Link-local IPv6 Address . . . . . : fe80::458d:343d:bca5:df0d%13  
IPv4 Address. . . . . : 192.168.101.10  
Subnet Mask . . . . . : 255.255.255.0  
Default Gateway . . . . . :
```

Ethernet adapter Bluetooth Network Connection:

```
Media State . . . . . : Media disconnected  
Connection-specific DNS Suffix . :
```

ADAPTER SETTINGS STATISCH IP

HW HILGERSOM

STATISCH IP (WORKSTATION)

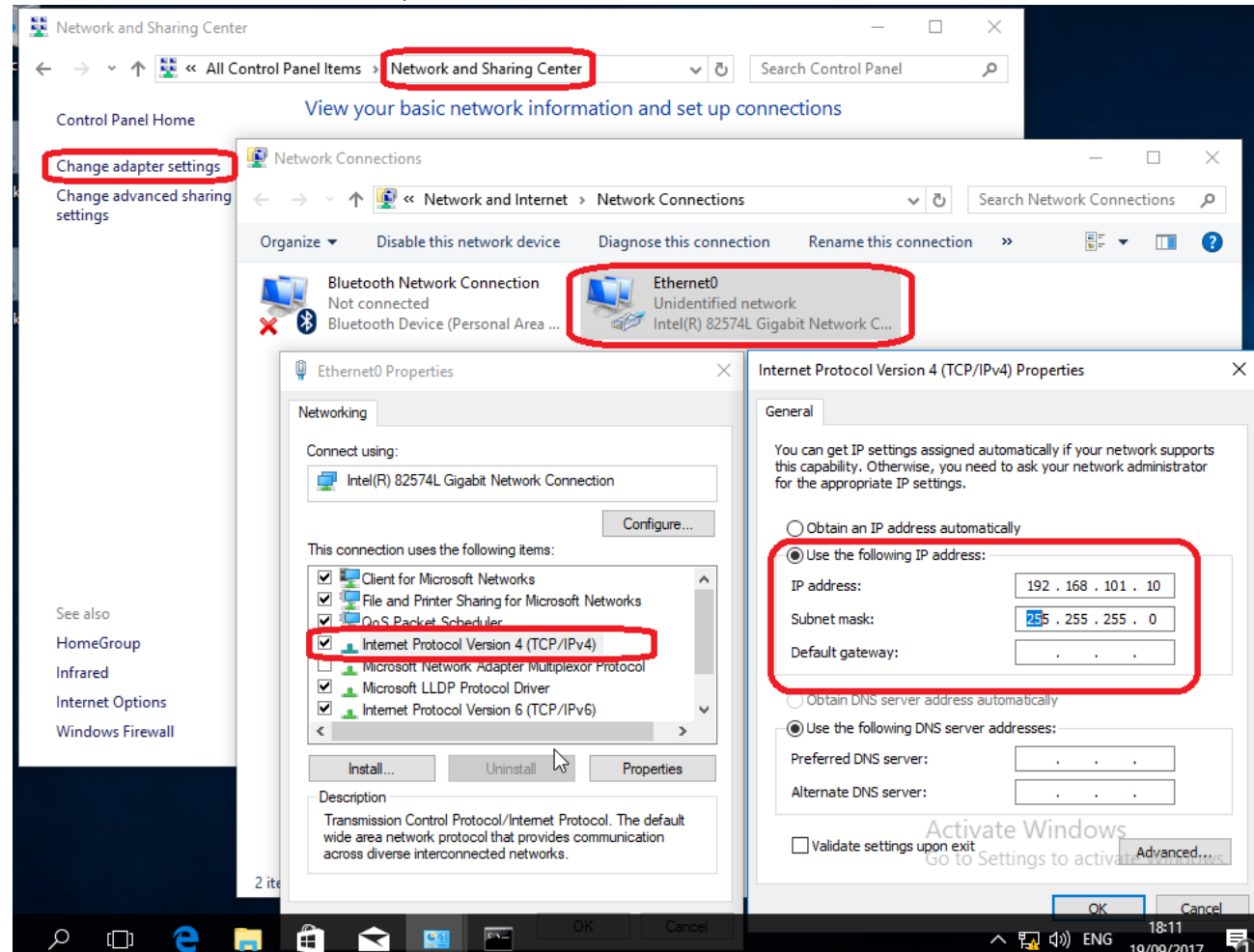
Network Sharing Center

Ethernet0

Internet Protocol Version 4

IP 192.168.101.10

SN 255.255.255.0

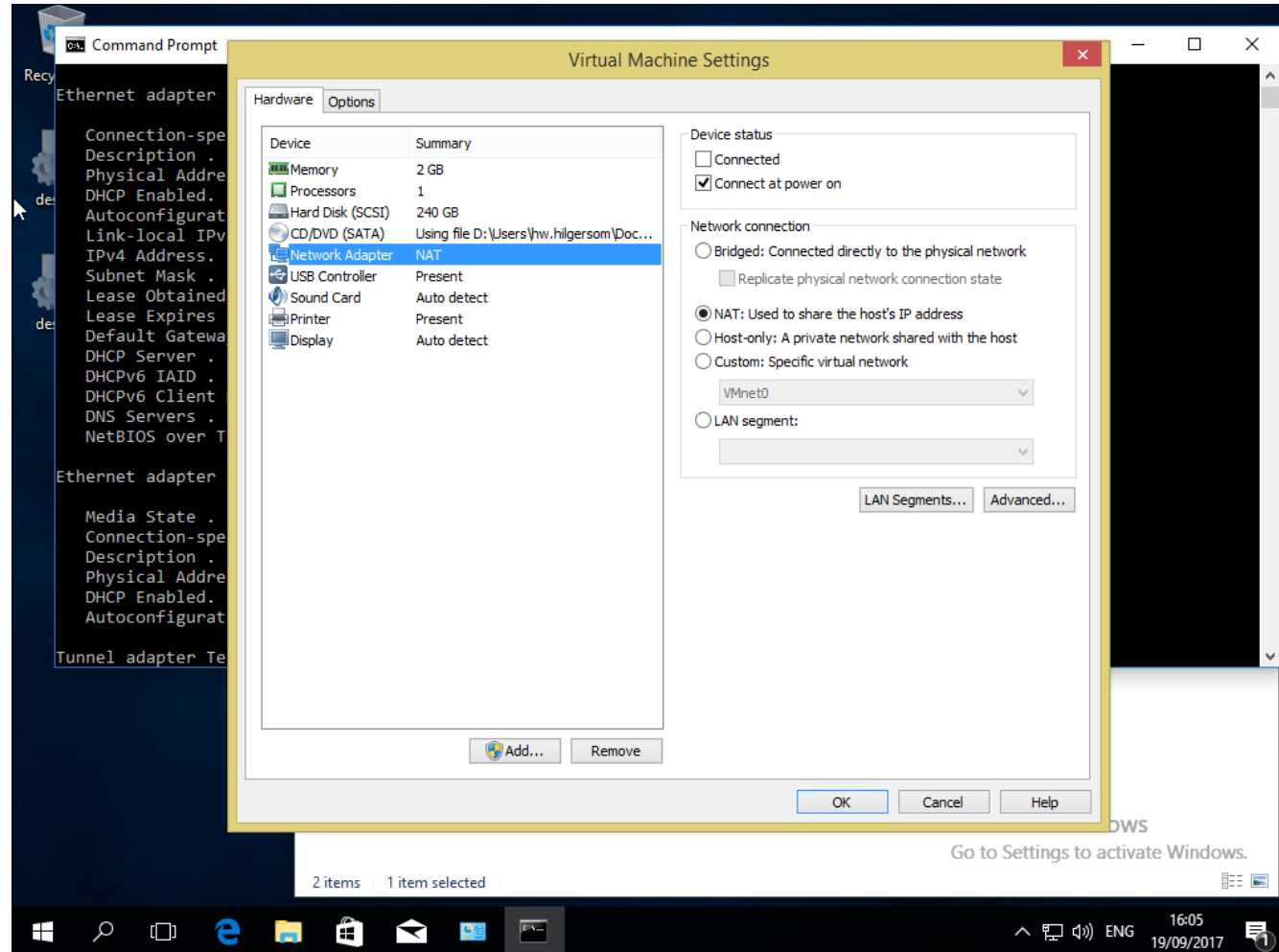


NAT (VMWARE)

VM Settings

Network Adapter

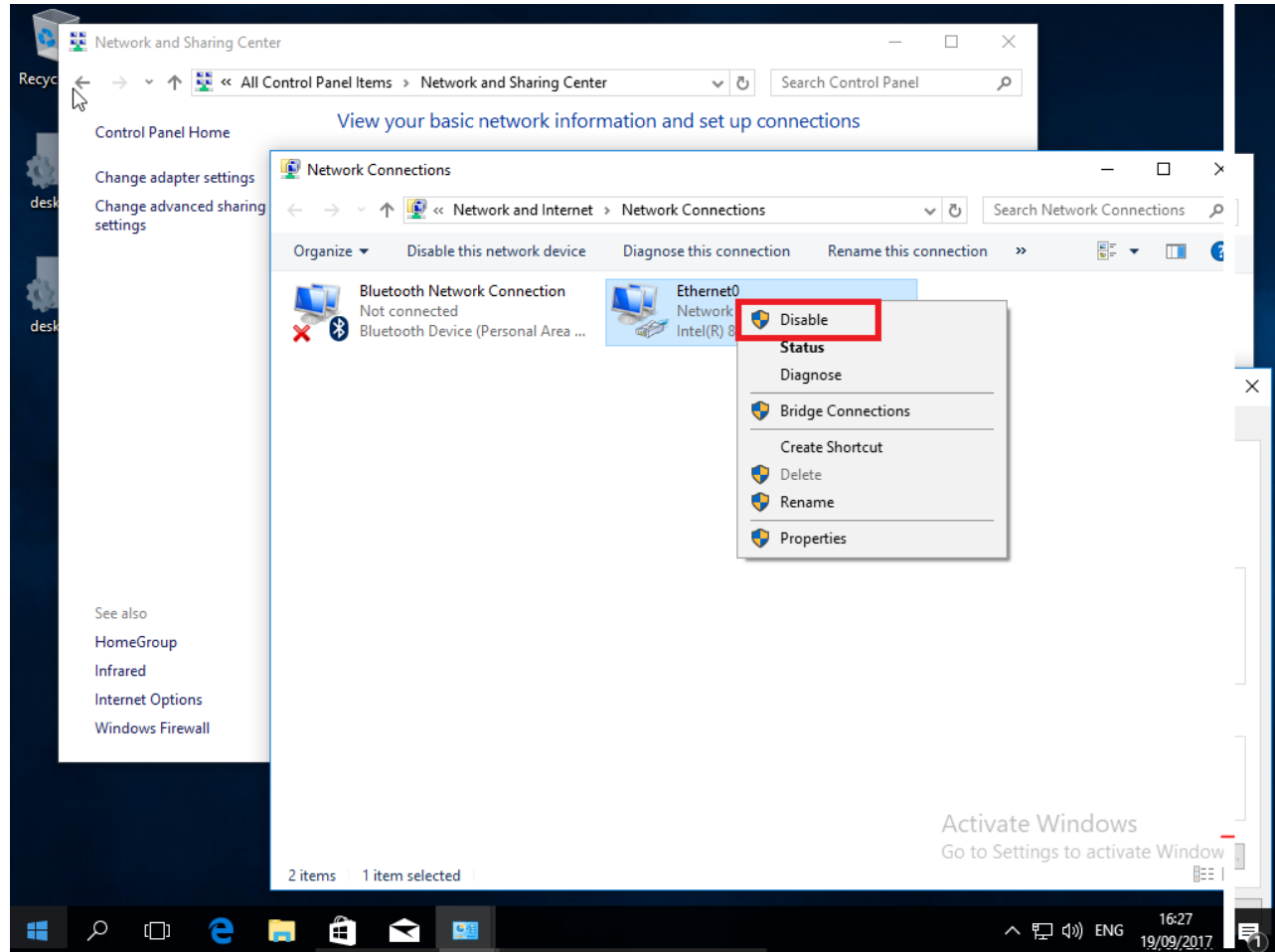
NAT



ADAPTER SETTINGS

Disable ...

Enable ...



IPCONFIG

```
Command Prompt

C:\Users\PCGebruiker1>ipconfig

Windows IP Configuration

Ethernet adapter Ethernet0:

    Connection-specific DNS Suffix  . : 
    Link-local IPv6 Address . . . . . : fe80::458d:343d:bca5:df0d%13
    IPv4 Address. . . . . : 192.168.101.10
    Subnet Mask . . . . . : 255.255.255.0
    Default Gateway . . . . . :

Ethernet adapter Bluetooth Network Connection:

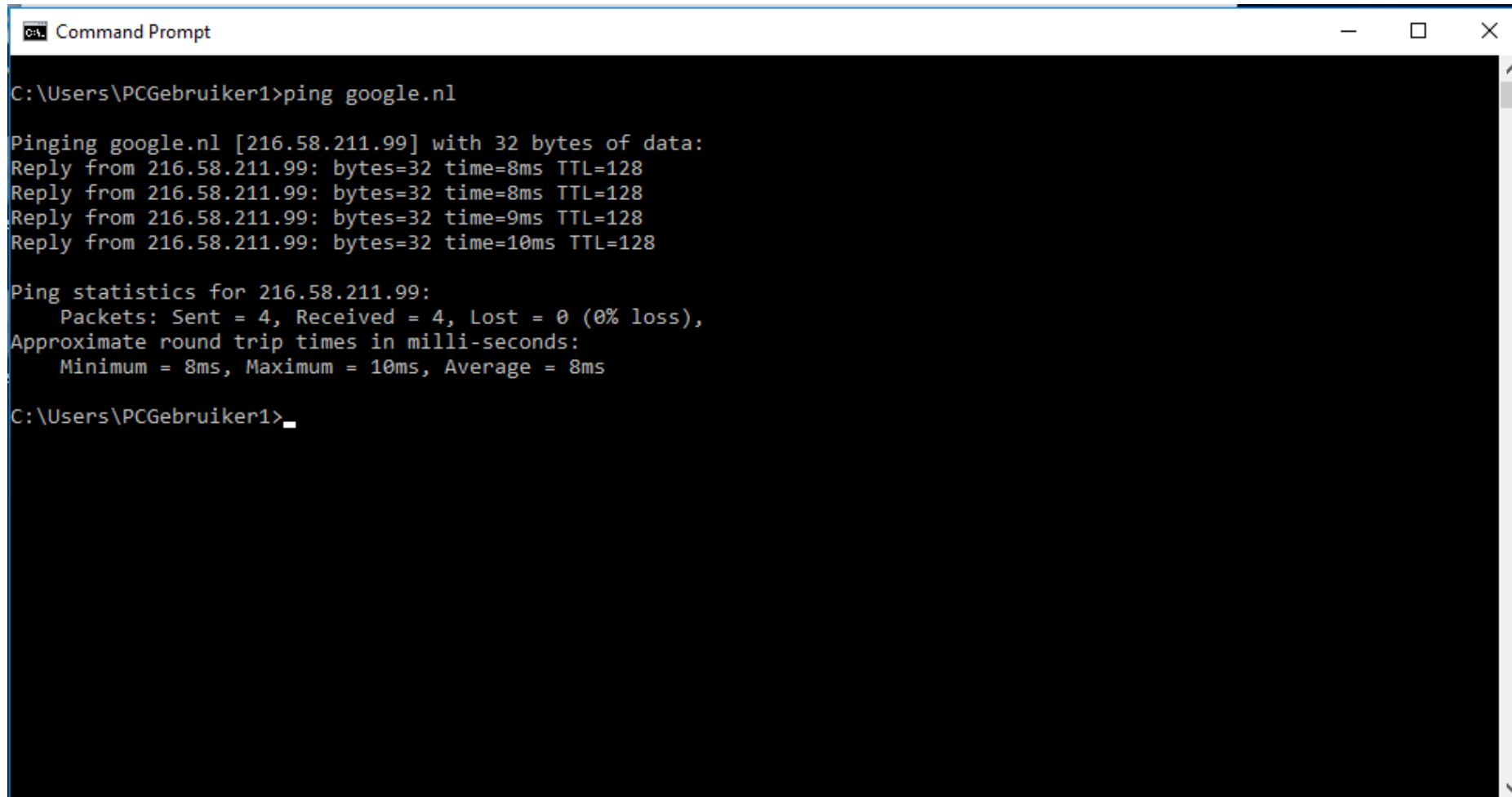
    Media State . . . . . : Media disconnected
    Connection-specific DNS Suffix  . :

Tunnel adapter Teredo Tunneling Pseudo-Interface:

    Media State . . . . . : Media disconnected
    Connection-specific DNS Suffix  . :

C:\Users\PCGebruiker1>
```

PING GOOGLE.NL



```
Command Prompt
C:\Users\PCGebruiker1>ping google.nl

Pinging google.nl [216.58.211.99] with 32 bytes of data:
Reply from 216.58.211.99: bytes=32 time=8ms TTL=128
Reply from 216.58.211.99: bytes=32 time=8ms TTL=128
Reply from 216.58.211.99: bytes=32 time=9ms TTL=128
Reply from 216.58.211.99: bytes=32 time=10ms TTL=128

Ping statistics for 216.58.211.99:
    Packets: Sent = 4, Received = 4, Lost = 0 (0% loss),
    Approximate round trip times in milli-seconds:
        Minimum = 8ms, Maximum = 10ms, Average = 8ms

C:\Users\PCGebruiker1>
```

EDIT > VIRTUAL NETWORK EDITOR (VMWARE)

Select Host-only

Haal vinkje weg bij:

Use local DHCP service

The screenshot shows a Windows desktop with a Command Prompt window in the background displaying a successful ping to google.nl. In the foreground, the Virtual Network Editor window is open, showing a table of virtual networks. The VMnet1 network is selected and highlighted with a red box. A red arrow points to the 'Use local DHCP service to distribute IP address to VMs' checkbox, which is currently unchecked. Below the table, the 'VMnet Information' section shows 'Host-only' selected as the network type. The 'Subnet IP' is set to 192.168.235.0 and the 'Subnet mask' is 255.255.255.0. The 'Use local DHCP service...' checkbox is circled in red.

Name	Type	External Connection	Host Connection	DHCP	Subnet Address
VMnet0	Bridged	Realtek PCIe GBE Family Co...	-	-	-
VMnet1	Host-only	-	Connected	-	192.168.235.0
VMnet8	NAT	NAT	Connected	Enabled	192.168.20.0

VMnet Information

Bridged (connect VMs directly to the external network)

Bridged to: Realtek PCIe GBE Family Controller Automatic Settings...

NAT (shared host's IP address with VMs) NAT Settings...

Host-only (connect VMs internally in a private network)

Connect a host virtual adapter to this network

Host virtual adapter name: VMware Network Adapter VMnet1

Use local DHCP service to distribute IP address to VMs DHCP Settings...

Subnet IP: 192.168.235.0 Subnet mask: 255.255.255.0

Restore Defaults OK Cancel Apply Help

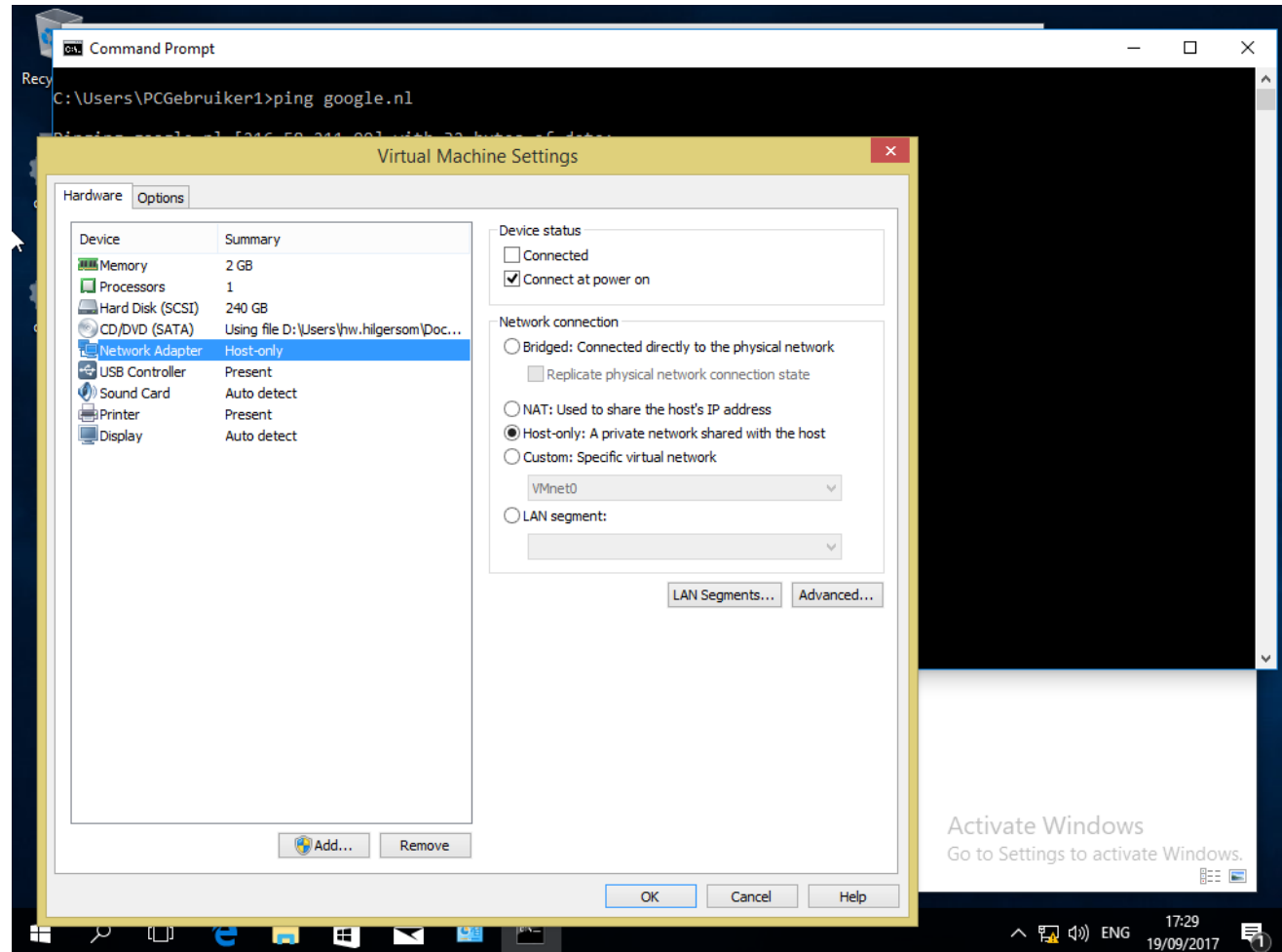
Activate Windows
Go to Settings to activate Windows.

HOST-ONLY (VMWARE)

VM Settings

Network Adapter

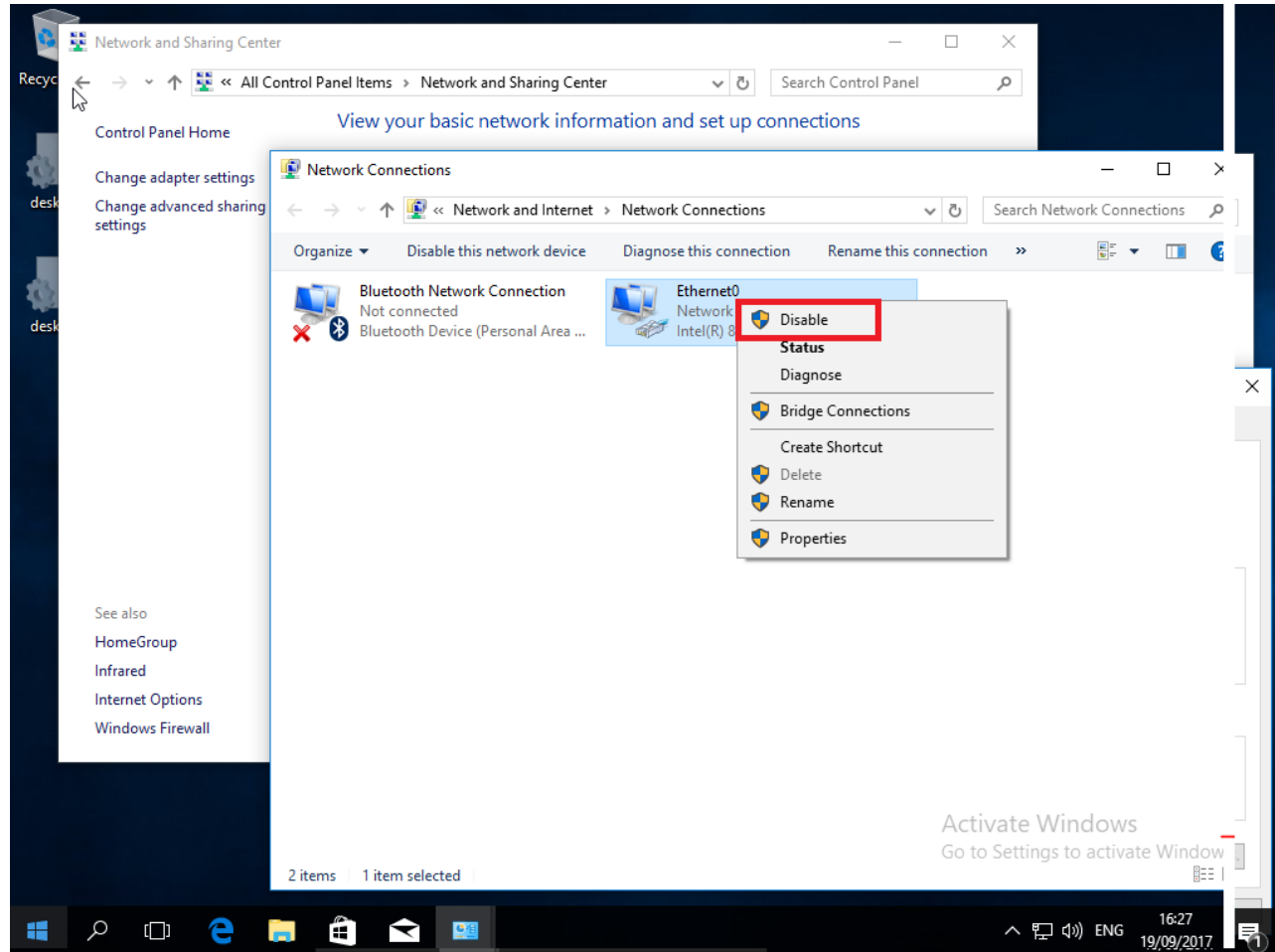
Host-only



ADAPTER SETTINGS

Disable ...

Enable ...



IPCONFIG

```
Command Prompt

C:\Users\PCGebruiker1>ipconfig

Windows IP Configuration

Ethernet adapter Ethernet0:

    Connection-specific DNS Suffix  . : 
    Link-local IPv6 Address . . . . . : fe80::458d:343d:bca5:df0d%13
    IPv4 Address. . . . . : 192.168.101.10
    Subnet Mask . . . . . : 255.255.255.0
    Default Gateway . . . . . : 

Ethernet adapter Bluetooth Network Connection:

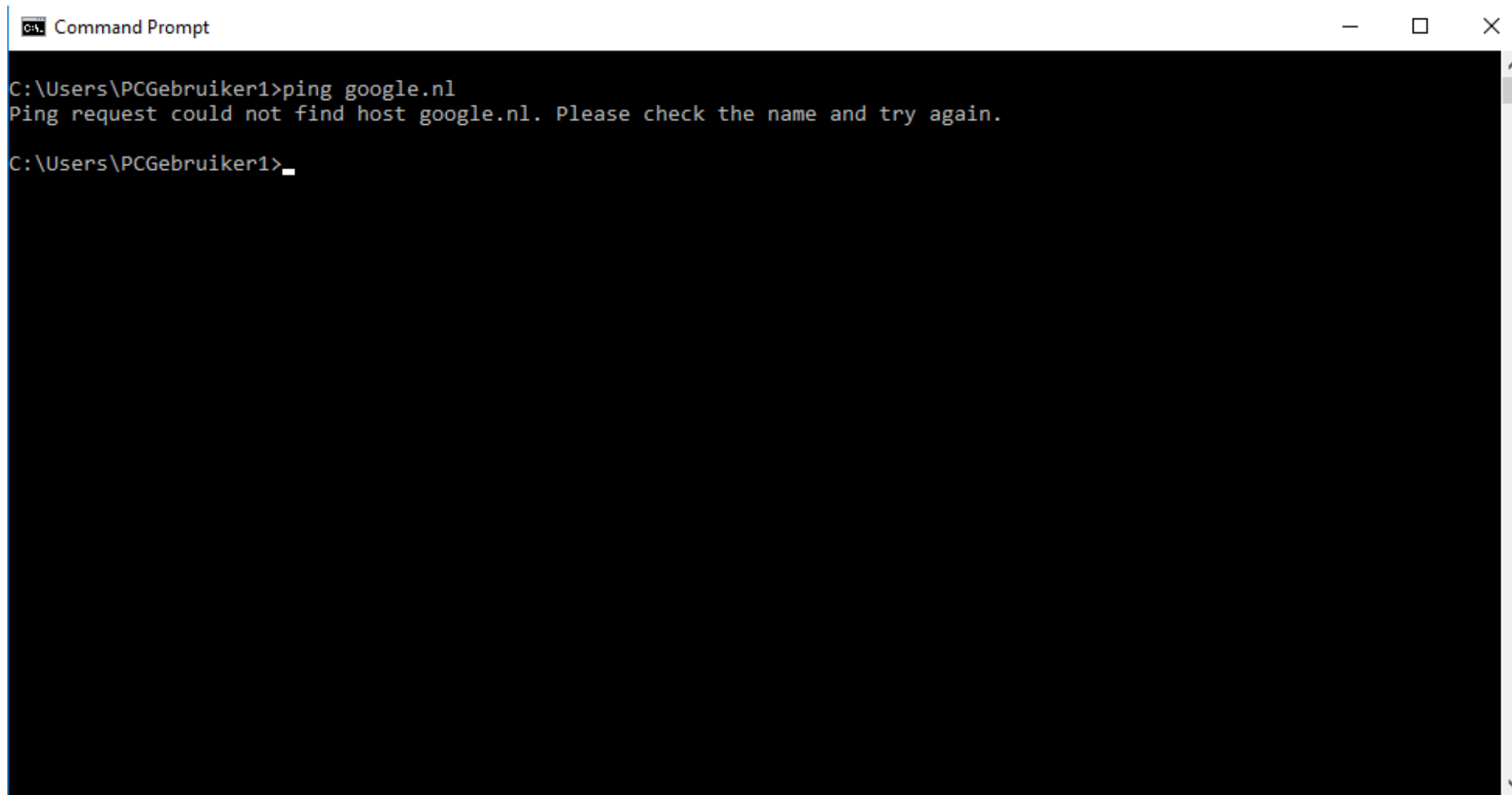
    Media State . . . . . : Media disconnected
    Connection-specific DNS Suffix  . : 

Tunnel adapter Teredo Tunneling Pseudo-Interface:

    Media State . . . . . : Media disconnected
    Connection-specific DNS Suffix  . : 

C:\Users\PCGebruiker1>
```

PING GOOGLE.NL



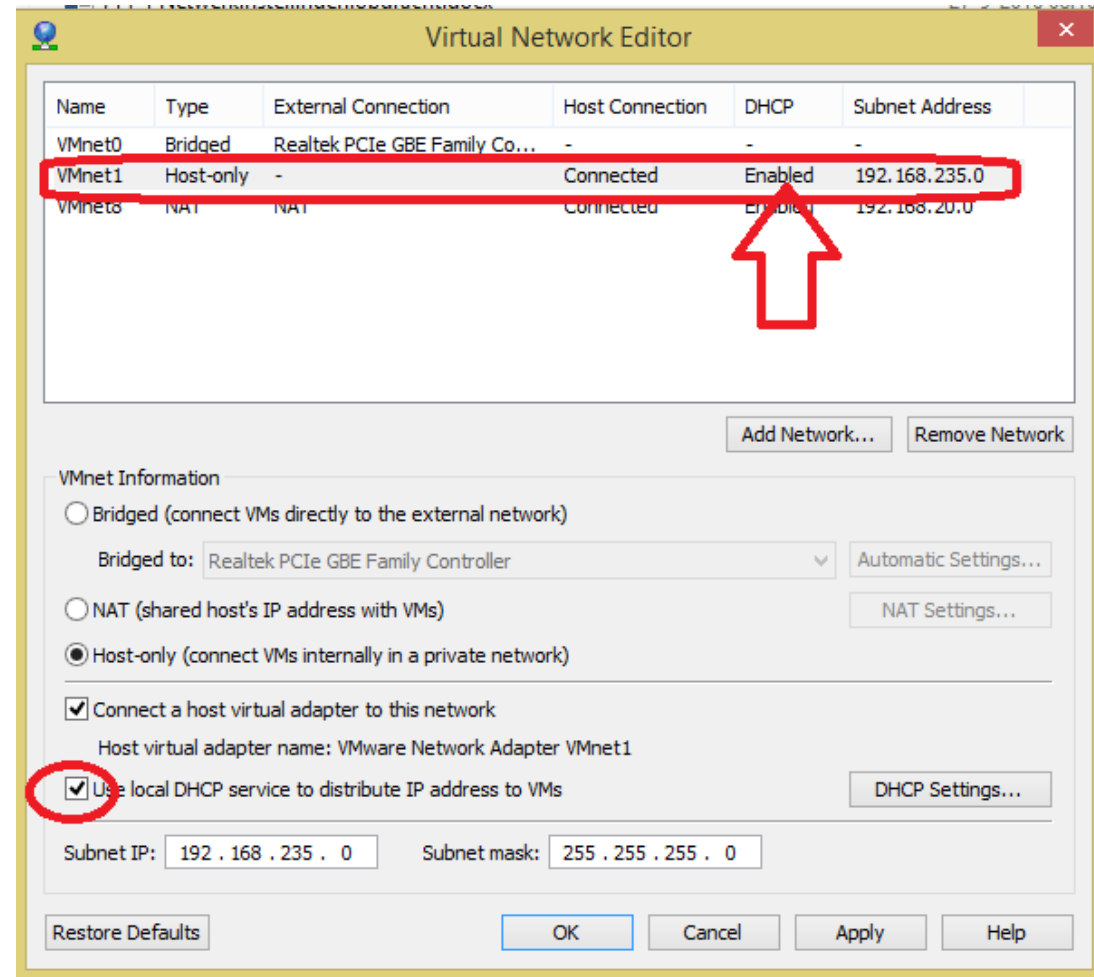
```
Command Prompt
C:\Users\PCGebruiker1>ping google.nl
Ping request could not find host google.nl. Please check the name and try again.
C:\Users\PCGebruiker1>_
```

EDIT > VIRTUAL NETWORK EDITOR (VMWARE)

Select Host-only

Zet vinkje bij:

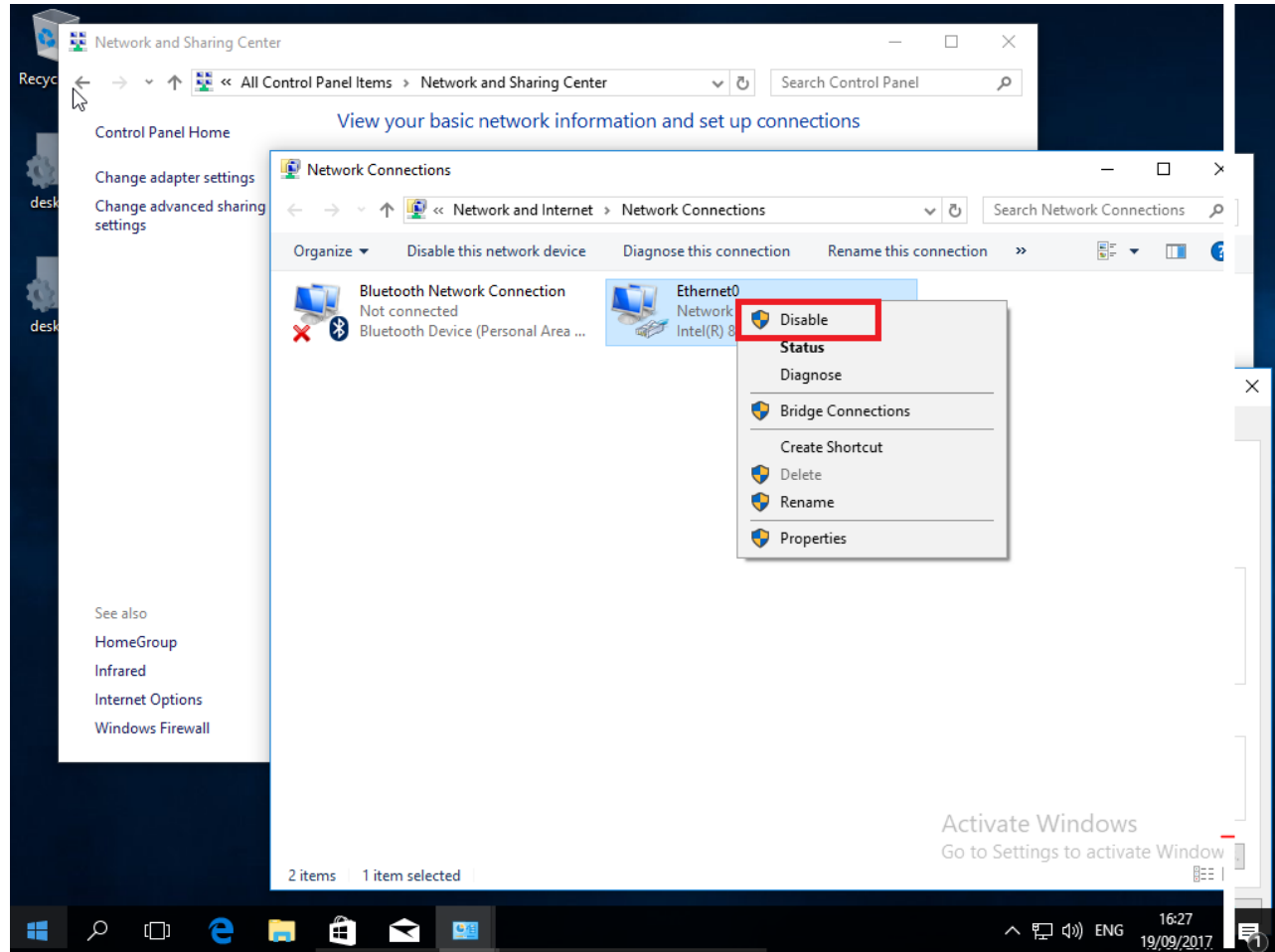
Use local DHCP service



ADAPTER SETTINGS

Disable ...

Enable ...



IPCONFIG

```
Command Prompt

C:\Users\PCGebruiker1>ipconfig

Windows IP Configuration

Ethernet adapter Ethernet0:

    Connection-specific DNS Suffix  . : 
    Link-local IPv6 Address . . . . . : fe80::458d:343d:bca5:df0d%13
    IPv4 Address. . . . . : 192.168.101.10
    Subnet Mask . . . . . : 255.255.255.0
    Default Gateway . . . . . : 

Ethernet adapter Bluetooth Network Connection:

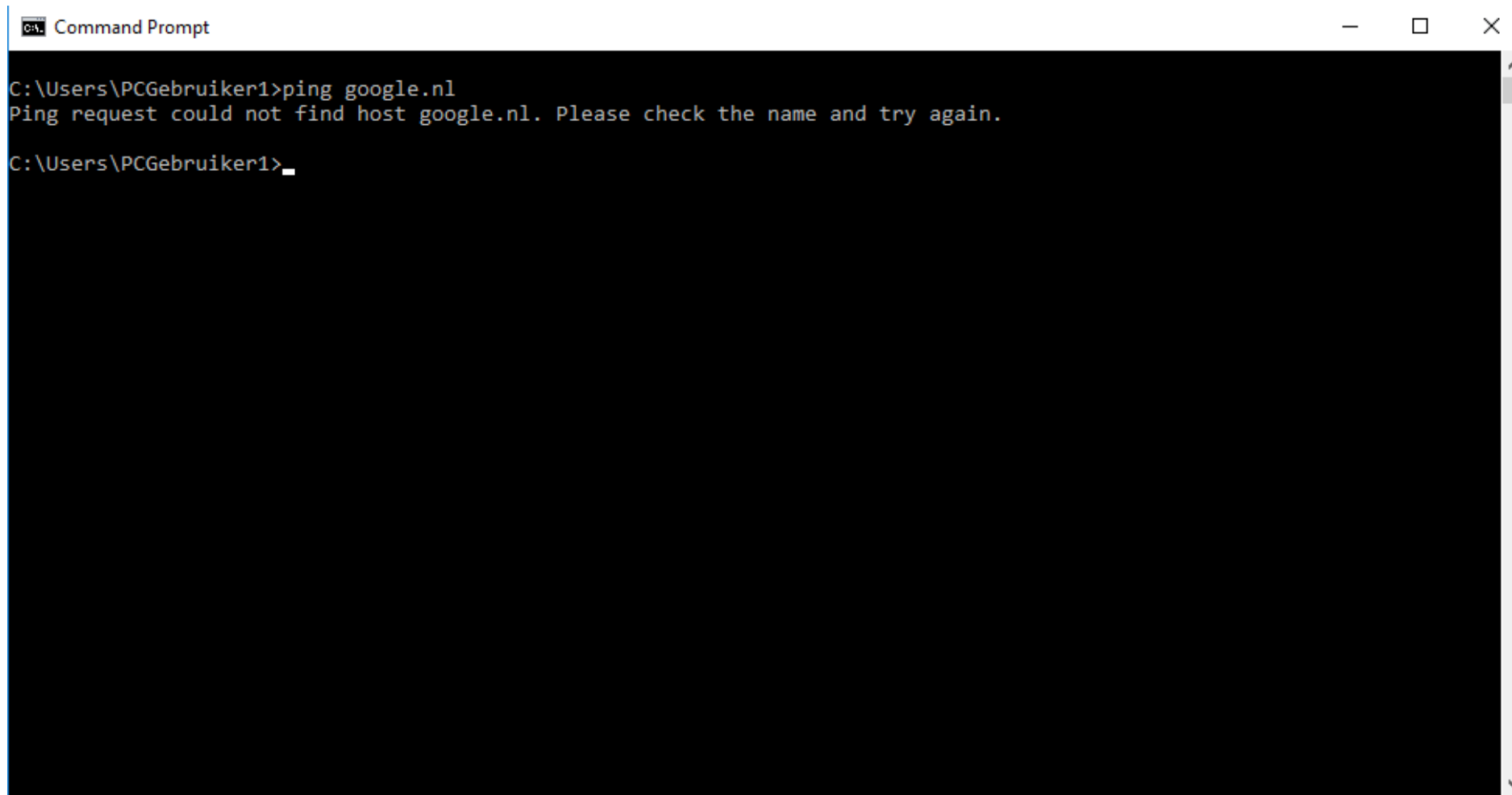
    Media State . . . . . : Media disconnected
    Connection-specific DNS Suffix  . : 

Tunnel adapter Teredo Tunneling Pseudo-Interface:

    Media State . . . . . : Media disconnected
    Connection-specific DNS Suffix  . : 

C:\Users\PCGebruiker1>
```

PING GOOGLE.NL



```
Command Prompt
C:\Users\PCGebruiker1>ping google.nl
Ping request could not find host google.nl. Please check the name and try again.
C:\Users\PCGebruiker1>_
```